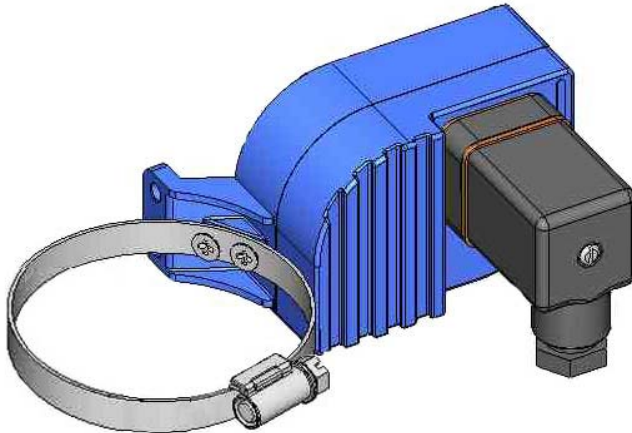




Instructions Manual



TECHNICAL DATA

- Material: Housing. Aluminium alloy
- Ambient temperature: -25 to 80 °C
- Ingress protection: IP65
- DIN 43650-A connector, PG9 cable gland
- Conforms with the Directive 73/23/EEC



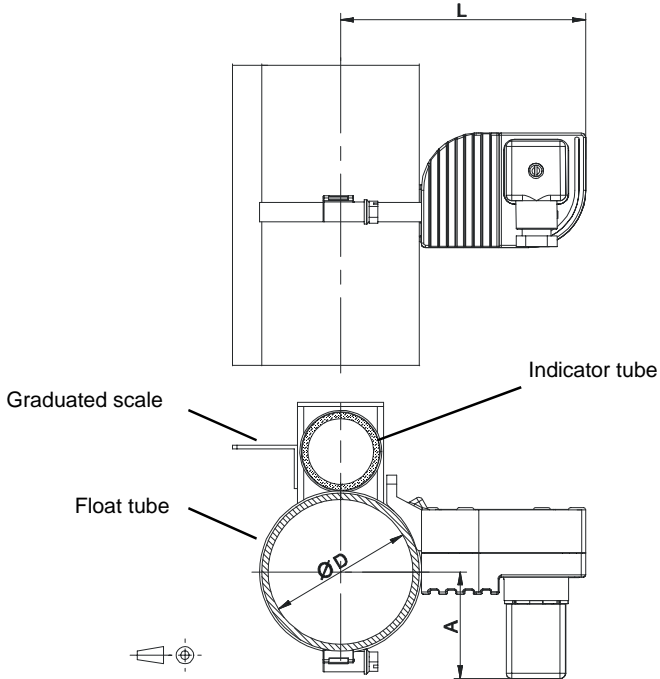
OPERATION

The level variations in a tank, move the float into the level body.

The float, as it passes by the point where the LT-AMM limit switch is, by means of magnetic coupling acts on the micro-switch lever changing its position.

The micro-switch position is maintained until the float passes in the opposite direction at the limit switch position, changing the micro-switch to its original state.

DIMENSIONS



Model	$\text{ØD} = \text{Ømin} \dots \text{Ømax}$	Length L	Length A
LT-AMM3	23 ... 35 mm	97 mm (for Ø 32)	62 mm (for Ø 32)
LT-AMM6	50 ... 70 mm	110 mm (for Ø 63)	55 mm (for Ø 63)
LT-AMM7	60 ... 80 mm	114 mm (for Ø 73)	50 mm (for Ø 73)

ELECTRICAL CONNECTION

For the electrical installation it is recommended to use multiple conductor cables with individual cable sections in the order of 0.25 or 0.5 mm² in order to make it easier to connect. Individual cables should not be used as they will impair the IP-65 rating of the cable gland.

Before starting the installation, check that the cable to be used are the right size for the cable gland on the connector, this will guarantee the instrument will stay water tight.

Peel the outside insulation to free the inner cables. It is recommended to tin the cables at the ends of the wires to avoid loose ends which can produce short circuits. Pass the cables through the cable gland and screw in the cables in their positions. Once the wiring is finished make sure that the cables are well gripped by the cable gland to maintain the ingress protection degree.

In the female connector (A):

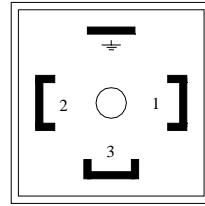
Terminal 1: Common

Terminal 2: NO

Terminal 3: NC

Earth terminal: Earth

Terminal 2 is the normally open contact when the float is below the level switch.

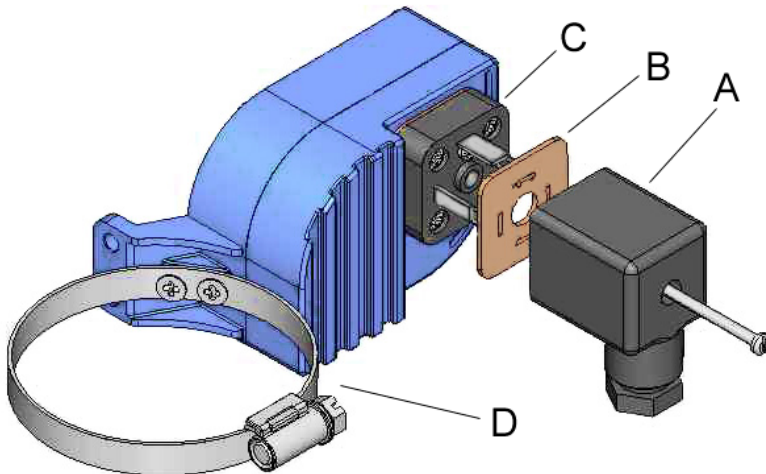


MOUNTING

Once the electrical connection has been made and the cable gland has been tightened, mount the female connector (A) on the male base (C), placing the seal (B) between the two pieces.

To fix the level switch in its position on the level, completely unscrew the hose band (D) and open it. With the hose band open situate the level switch on the float tube and close the hose band over the tube.

Situate the level switch at the required height and tighten the hose band.



MAINTENANCE (figure of the following page)

Place the limit switch in its normal working position (top figure) and move a magnet in the center of the hose band (D) as if it was the float. The magnet should be in a vertical position with the North pole upwards.

The micro-switch lever (1) has a roller that runs on the cam (3).

To check the operation and correct possible misalignments, do the following:

First open the limit switch housing by removing the four M4 x 25 DIN 7985 screws.

Check that the magnet assembly (2) is firmly fixed to the shaft by the screw (5).

Position the screw (5) as in the drawing (against the stop in a clockwise direction). Position the cam (3) as in the drawing and tighten the screw (4). In this position the lever roller should be at about 1 mm from the screw head (4).

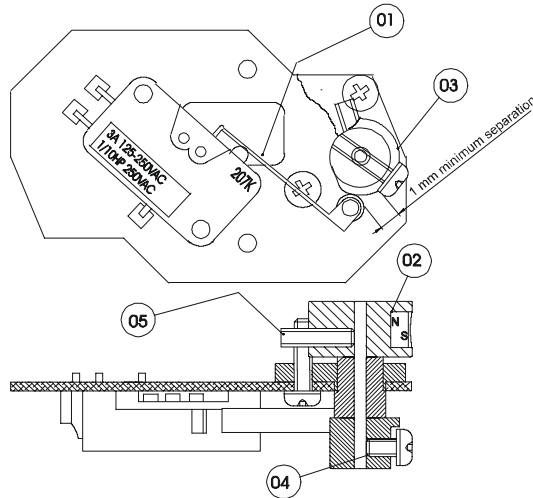
If a multimeter with resistance measurement is available, connect it to terminals 1 & 2 of the connector base.

Move the cam (3) slowly in both directions over the whole of its travel.

The multimeter must change from open circuit to short circuit in one direction and vice versa in the other, when the roller is half way up the eccentric zone of the cam.

When a multimeter is not available, the above can be done by hearing the "click" when the micro-switch changes over.

Note: If due to bad handling of the micro-switch lever, the operation is not correct, the micro-switch lever (1) should be bent slightly until correct operation is obtained.



WARRANTY

Tecfluid S.A. GUARANTEES ALL ITS PRODUCTS FOR A PERIOD OF 24 MONTHS, after consignment, against all defects in materials and workmanship.

This warranty does not cover failures which can be imputed to misuse, use in an application different to that specified in the order, the result of service or modification by un-authorized persons, bad handling or accident.

This warranty is limited to cover the repair or replacement defective parts which have not been damaged by misuse.

This warranty is limited to the repair of the equipment and all further and eventually following damages are not covered by this warranty.

Any consignment of equipment to our factory or distributor must be previously authorised. The consignment should be done with the equipment well packed, clean of any liquids, grease or hazardous materials. Tecfluid S.A. will not accept any responsibility for damage done during transport.

Together with the equipment, a note should be enclosed indicating the failure observed, the name, address and telephone number of the sender.

TECFLUID
B.P. 27709
95046 CERGY PONTOISE CEDEX (FRANCE)
Tél. 01 34 64 38 00 – Fax. 01 30 37 96 86
Internet : www.tecfluid.fr